

ENLUXTRA E-LEARNING VIDEO COURSE TRANSCRIPT



ENLUXTRA™

Self-Adaptive Wound Care Technology

Doc ID:

Copyright © 2015 OSNovative Systems, Inc.

1

#1. Welcome to the Enluxtra Knowledge Base.

Content overview

- Enluxtra technology
- Application key points
 - Size
 - Peri-wound coverage
 - Contact with wound bed
 - Packing choices
 - Frequency of dressing changes
- Co-products
- Case studies: avoiding common mistakes

Copyright © 2015 OSNovative Systems, Inc.

2



#2. This video is about:

- Enluxtra technology
- Dressing application key points, including
- Sizing
- Peri-wound coverage
- Wound bed contact
- Packing material choices
- And frequency of dressing changes
- As well as best co-products
- And simple ways to avoid common mistakes



#3. Let's begin!



Enluxtra: Self-Adaptive Technology

Copyright © 2015 OSInnovative Systems, Inc.



#4. Every wound care professional knows that wound healing process involves several equally important components:

- Wound care components
- Patient's nutrition and hydration
- Underlying health conditions
- Wound offloading
- Adequate wound treatment

- patient's proper nutrition and hydration,
- addressing underlying health conditions,
- wound offloading,
- AND **adequate wound treatment.**

Now, let's discuss wound treatment challenges.

Copyright © 2015 OSInnovative Systems, Inc.

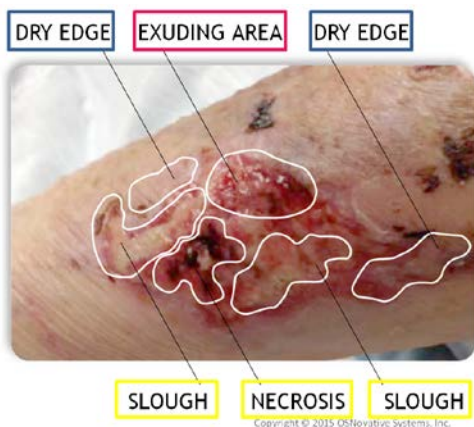


#5. Today, the number one wound care challenge that medical professionals face is that wounds are complex non-uniform systems.

And treating an unstable system is very difficult.

Various wound tissue types and areas with various levels of drainage coexist within the wound:

- some parts are dry,
- some parts are exuding,
- there are areas of necrosis and slough.

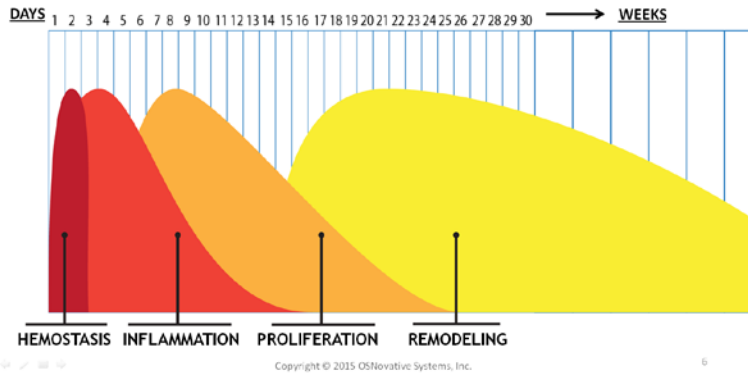


Wound care
challenge #1:

Wounds are
non-uniform.

Copyright © 2015 OSInnovative Systems, Inc.

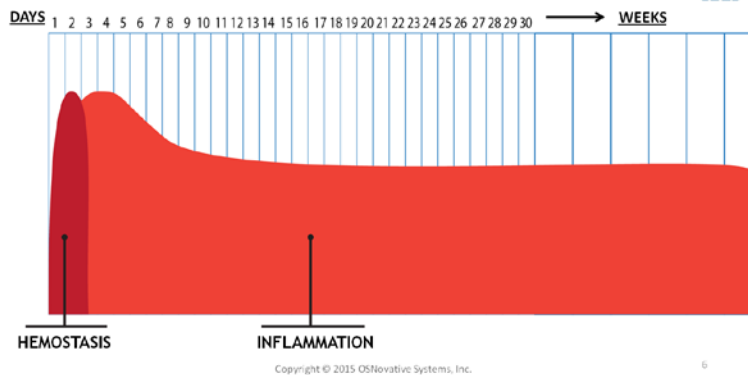
Normal vs. chronic wounds



#6. Normal healing process takes the wound from its appearance to complete healing through:

- hemostasis
- inflammation
- proliferation and remodeling stages.

Normal vs. chronic wounds



Chronic wounds, however, are frequently stalled in the inflammatory stage and require special care to resume the normal healing progress.

Optimal treatment approach for all wound zones

- All at the same time
- Localized over each wound area
- Following the evolving wound dynamically and reversibly



#7. The fact is, the best way to jumpstart the healing process of a stalled or chronic wound, is to treat each of the different components of the wound exactly how they need to be treated to achieve healing:

- all at the same time
- localized over the corresponding area of the specific tissue type and component
- following the evolving wound dynamically and reversibly.

But how do we do this? It sounds impossible!

What is Enluxtra



The first and only self-regulating superabsorbent fiber dressing with adaptive absorbency and built-in adaptive hydration function.

Copyright © 2015 OSInnovative systems, Inc.



#8. Meet Enluxtra.

Designed with the power to individually address all the distinct areas in the wound.

Enluxtra is the first and only self-regulating superabsorbent fiber dressing with adaptive absorbency and built-in adaptive hydration function.

What is Enluxtra



ENLUXTRA is suitable for wounds with any drainage level - from lowest to highest.

Copyright © 2015 OSInnovative systems, Inc.



This means that it is suitable for wounds with any drainage level – from lowest to highest.

Now let's take a look at this latest advancement in wound care technology, so you can see exactly how it works.

#9. You can understand now that Enluxtra addresses every area of the wound separately, providing appropriate care for each specific location. It:



OPTIMALLY HYDRATES OPTIMALLY ABSORBS OPTIMALLY HYDRATES
 DRY EDGE EXUDING AREA DRY EDGE



Enluxtra does it
 SIMULTANEOUSLY
 in each distinct
 wound area.

- optimally absorbs exudate in draining areas of the wound without overdrying
- optimally hydrates dry and non-exuding areas;
- supports natural autolytic debridement in areas with necrosis and slough.

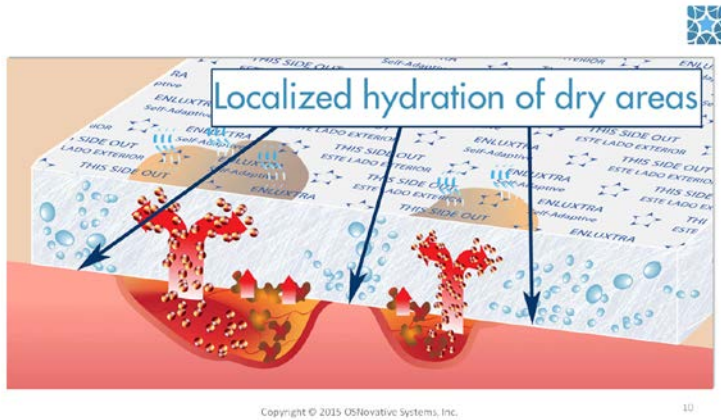
All this happens simultaneously...

SUPPORTS NATURAL AUTOLYTIC DEBRIDEMENT PROCESS

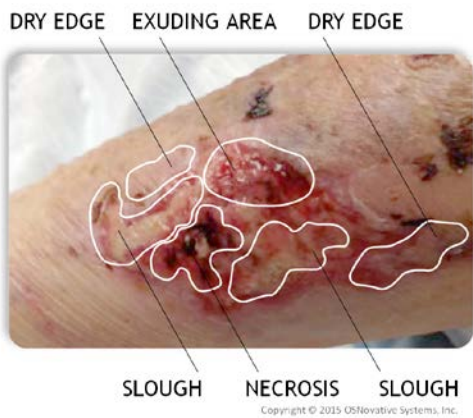
Copyright © 2015 OSInnovative systems, Inc.

9

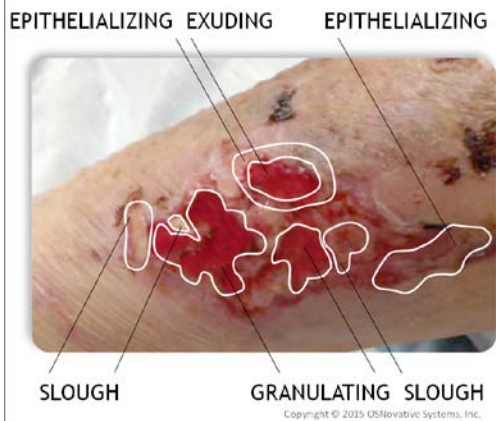
#10. ...relevant to each specific area of the wound.

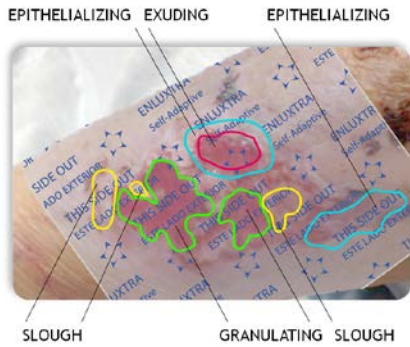


#11. But that's not all.



The second wound care challenge is that wounds can behave unpredictably during dressing wear making it difficult to monitor ongoing changes in the wound in real time.





■ Enluxtra monitors the wound 24/7 and dynamically changes its local functions in response to changes taking place in the wound

Copyright © 2015 OSInnovative Systems, Inc.

12

#12. Now, Enluxtra is designed to respond to these changes. Its patented structural composition allows Enluxtra to automatically adapt the dressing material functions.

As the healing process progresses, Enluxtra:

- adapts to changing conditions of the wound.
- This means it optimally absorbs in areas that need it.
- It continues to support the natural autolytic debridement process where necessary
- while creating optimal conditions for quick cell proliferation, granulation, and other healing processes
- while it also maintains the delicate moisture balance at all times.

In this way, Enluxtra is able to monitor the wound 24/7, dynamically changing its local functions in response to changes taking place in the wound and supporting wound healing process at all times.

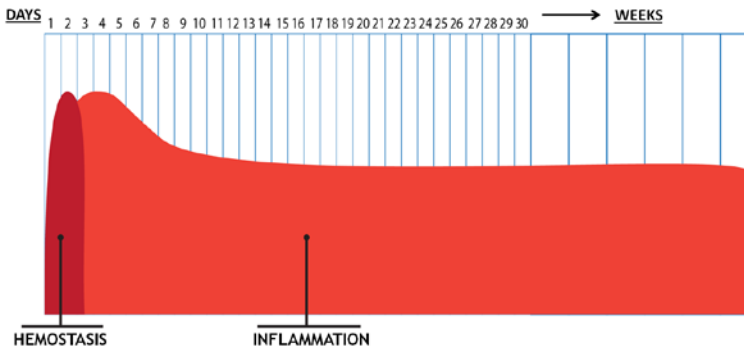
#13. As the wound evolves, Enluxtra continues to adapt its local functions and treats every area of the wound separately, thus helping continue the normal healing process.



Copyright © 2015 OSInnovative Systems, Inc.

13

Enluxtra on chronic wounds



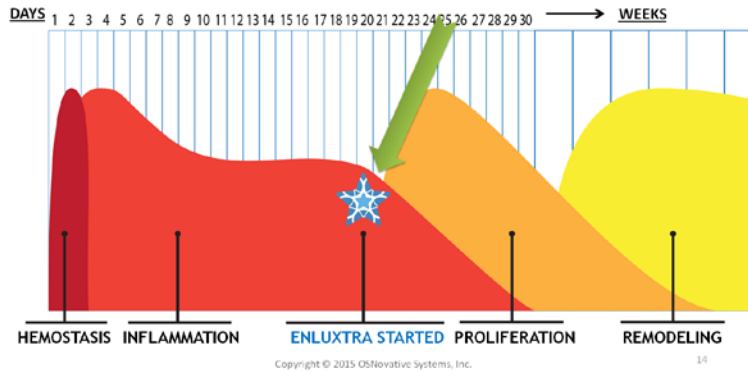
Copyright © 2015 OSInnovative Systems, Inc.

14

#14. To move past the inflammation stage one has to consider bacterial burden, necrotic tissue, and moisture balance of the whole wound.

- Bacterial overgrowth or infection need to be eliminated.
- Necrotic tissue, in most cases, needs to be debrided.
- And moisture balance needs to be maintained by moisturizing dry tissue and by drying wet tissue.

Enluxtra on chronic wounds



When Enluxtra is applied to a wound it treats all the different areas simultaneously, thereby ending the inflammatory stage and restarting the healing process.

Expert recommended



VA Health Care System

Adventist Health

Christiana Care

UCSF Medical Center

Covenant Health

Ochsner Health System

Tanner Health System

San Francisco General Hospital

Ascension Health

Dignity Health

MedStar Health

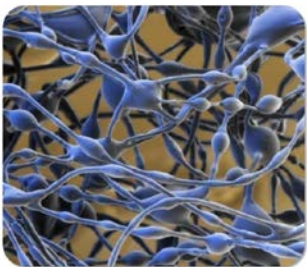
Copyright © 2015 OSNovative Systems, Inc. – CONFIDENTIAL

#15. You may have already started to become aware of the fact that Enluxtra is able to heal the most difficult wounds, and for your success as a wound care specialist it is very important for you to have Enluxtra in your arsenal.

Enluxtra has been proven in practice and is recommended by leading national experts in wound care.

It is adopted by leading hospitals and wound care centers internationally.

Enluxtra design



Enluxtra under the microscope

Core layers are composed of:

- Proprietary synthetic polymers
- Inactive bio-inert ingredients

Copyright © 2015 OSNovative Systems, Inc.

16

#16. So, how does it work?

Now we know that Enluxtra can automatically change its function in any area of the dressing independently. This is possible because of the patented smart polymer structure in its composition.

The core layers of the dressing are composed of:

- proprietary synthetic polymers
- and
- inactive bio-inert ingredients.

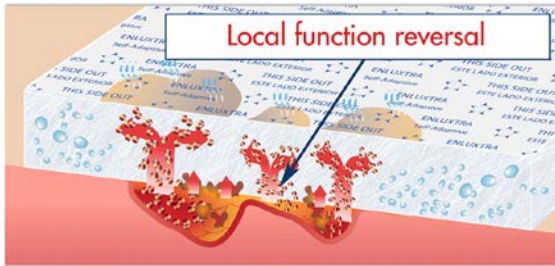
Enluxtra's polymers are sensitive to changes in humidity and fluid content in each unique area of the wound.

- In exuding areas polymers sense high humidity and high moisture content - they become more permeable to fluids >>> **Enluxtra absorbs**



#17. Polymers actively remove barriers to healing.

Enluxtra is structurally designed to work in sync with the ever-changing wound microenvironment.



Copyright © 2015 OSNovative Systems, Inc.

17

In exuding areas polymers sense high humidity and high moisture content – and become more permeable to fluids.

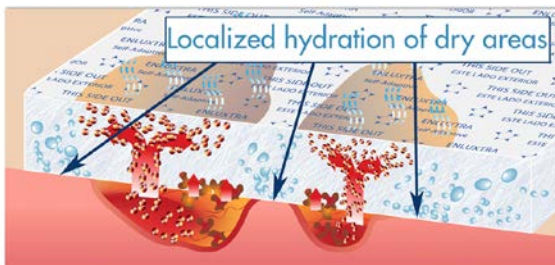
Enluxtra effectively absorbs any amount of exudate, exhibiting the highest absorption rate on the market.

- In dry areas polymers sense low humidity and create optimal moist environment >>> **Enluxtra hydrates**



In dry areas polymers sense low humidity and start optimally hydrating,

maintaining continuous moisture balance and creating an optimal moist wound microenvironment.



Copyright © 2015 OSNovative Systems, Inc.

17

Enluxtra's surfaces



#18. This is what Enluxtra looks like. Its material is soft, cushiony, pleasant to the touch and very comfortable in wear.

Breathable multi-layer membrane

Porous non-adhering wound contact layer



Copyright © 2015 OSNovative Systems, Inc.

18

The surface that faces the wound is porous and non-adhering. Patients report soothing and cooling sensations the moment Enluxtra is applied.

The other side is breathable backing film, permeable to water vapors, but impermeable to fluids and microorganisms. It also serves a strikethrough barrier and protects from harmful bacteria.

Enluxtra is safe!

- Non-cytotoxic
- Hyperbaric safe
- Hypoallergenic
- Non-biological, no animal ingredients
- No active medications
- Latex-free, honey-free

Copyright © 2015 OSInovative Systems, Inc.



#19. Enluxtra is safe.

It is:

- non-cytotoxic
- well suited for use in hyperbaric chambers
- hypoallergenic
- non-biological and free from animal ingredients
- it does not contain any active medications
- is latex-free and honey-free

19

Benefits of Enluxtra

- Superior drainage management
- Continuous maintenance of optimal moist healing environment in all parts of the wound, including peri-wound skin
- Bioburden reduction by sequestering microorganisms
- Efficient support of natural autolytic debridement
- Evacuation of liquefied slough and microorganisms from the wound bed
- MMP evacuation and binding
- Skin maceration prevention
- Desiccation prevention
- Pain and odor reduction
- Barrier for exogenous microorganisms and fluids
- Ensured uninterrupted homeostasis due to long wear time

Copyright © 2015 OSInovative Systems, Inc.



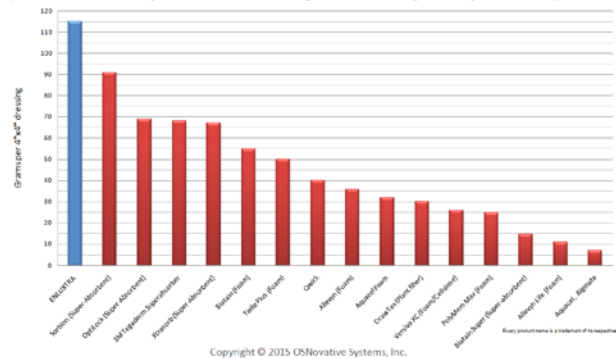
#20-21. Some of the key benefits of using Enluxtra include:

- Superior drainage management
- Continuous maintenance of optimal moist healing environment in all parts of the wound, including peri-wound skin
- Bioburden reduction by sequestering microorganisms
- Efficient support of natural autolytic debridement
- Evacuation of liquefied slough and microorganisms from the wound bed
- MMP evacuation and binding
- Skin maceration prevention
- Desiccation prevention
- Pain and odor reduction
- Barrier for exogenous microorganisms and fluids
- Ensured uninterrupted homeostasis due to long wear time

Patients and doctors have also reported cases of reduced scar formation with continuous Enluxtra wear

21

ENLUXTRA Superior Exudate Absorption/Retention (4"x4" dressing, 0.9% saline @ 40 mmHg compression)



#22. Today Enluxtra exhibits the highest absorption and retention rate when compared to any other product on the market.

Enluxtra locks in exudate and prevents it from being released onto the wound bed even under pressure.



Application guidelines



#23. Now, let's look at application guidelines.

Enluxtra is very easy to apply and change, but to ensure maximum success, please note the following important points.

Copyright © 2015 OSNovative Systems, Inc.

23

Assess the wound as usual to determine:



- **Size**, including compromised peri-wound skin
- Level of **drainage**
- Wound **depth**
- Presence of **slough** and/or **infection**
- **Pain** level and cause
- Other components of the assessment process

Copyright © 2015 OSNovative Systems, Inc.

24

#24. As with any other product, you must first assess the wound

- using general best practice guidelines, such as:
- measuring the size of the wound, including peri-wound skin
- assessing the level of drainage
- wound depth
- presence and nature of slough and/or infection
- pain level and cause
- and other components of the assessment process



Copyright © 2015 OSNovative Systems, Inc.

Basic rules for success



#25. Enluxtra does not require complicated care protocols.

As with all advanced technology, following instructions will ensure the best outcomes.

Following the basic rules we are about to show you will help you get the most out of your Enluxtra use.

And your patients will definitely thank you.



Copyright © 2015 OSNovative Systems, Inc.

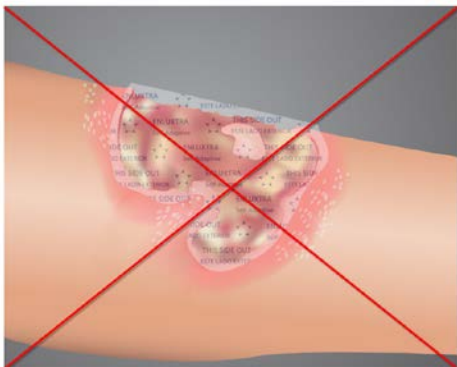
Rule #1. Choose a LARGER DRESSING



#26. Rule One: Choose a larger dressing size.

Always use a dressing large enough to cover the compromised peri-wound skin, and to overlap the healthy skin by at least 1 inch.

If the dressing is too small, the skin and wound bed may become macerated and healing will be delayed.



Copyright © 2015 OSNovative Systems, Inc.

DO NOT cut Enluxtra to wound size



#27. Do not cut the dressing to wound size. Instead ...

Trim only to fit in difficult areas.



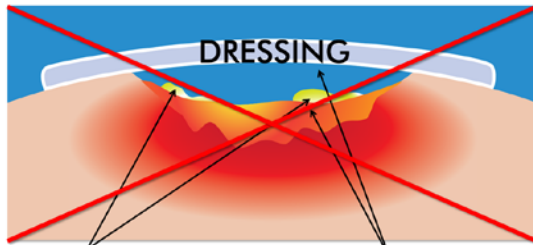
#28. ...trim if it needs to fit into a difficult area, or interferes with body part movement.

Copyright © 2015 OSNovative Systems, Inc.

28

Rule #2.
Ensure
FULL
CONTACT

No void under Enluxtra!



Slough is formed Exudate not absorbed

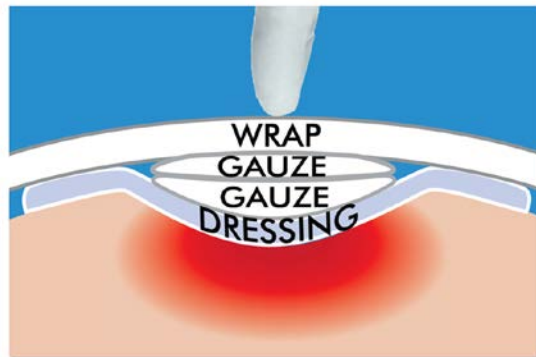
Copyright © 2015 OSNovative Systems, Inc.

29

#29. Rule Two: Ensure FULL contact with the wound bed.

Enluxtra MUST be in full contact with the wound with no tenting. If there is a gap between Enluxtra and wound bed, the dressing material will not absorb the exudate.

This will cause slough formation and maceration of the wound and peri-wound area.



Ensure
full
contact
with the
wound
bed

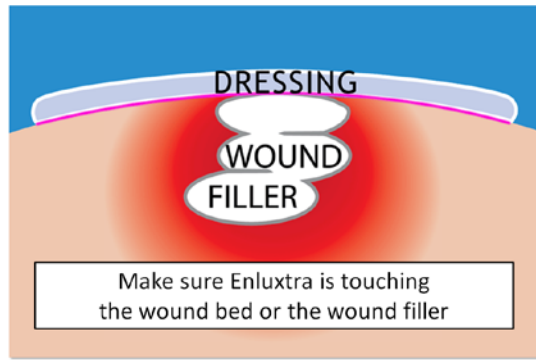
Copyright © 2015 OSNovative Systems, Inc.

30

#30. If the wound has any depth, apply Enluxtra, press it down with your finger, place folded gauze pads on top, and apply a wrap.

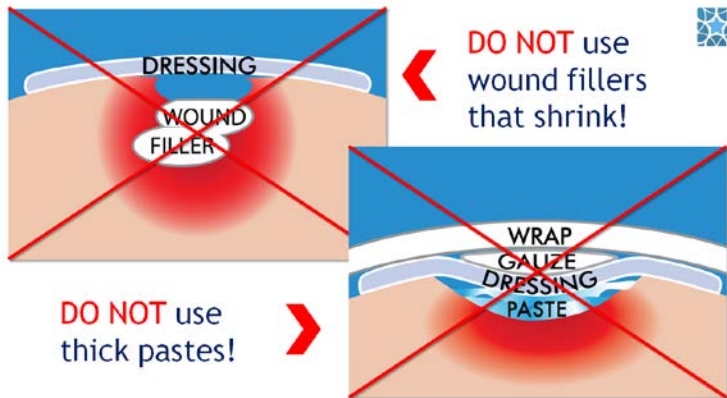
Press it down again to make sure there is no tenting and Enluxtra will stay in full contact with the wound bed at all times.

If you press down and feel empty space between the dressing and the wound — add additional gauze and compress or tape down to contour Enluxtra to the wound bed.



Fill cavity with wound filler

#31. For deep or tunneling wounds, pack the cavity with a wound filler and apply Enluxtra making sure its undersurface is touching the filler, wound and peri-wound area, as well as healthy surrounding skin.

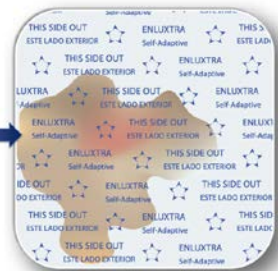


#32. Do NOT use:

- fillers that shrink
- or
- thick pastes that block vertical draw

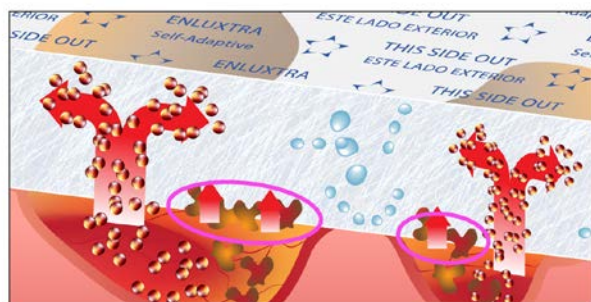
— this will cause wound maceration.

Rule #3. Always change before exudate reaches dressing edge



#33. Rule Three: Always change Enluxtra before the exudate reaches the dressing edge.

Rule #4. CHANGE more often initially



Copyright © 2015 OSNovative Systems, Inc.

34

#34. Rule Four: Change more often initially. Enluxtra is designed to stay on a wound for up to 7 to 10 days.

However, when you first start using the dressing it is best to increase wear time gradually to clear the wound from any non-vital tissues, such as slough and necrosis since these semi-solid products of autolytic debridement may clog up the surface of the dressing.

Rule #4. CHANGE more often initially

- For heavily draining and very sloughy wounds change Enluxtra every day until the drainage subsides.
- For all other wounds change every 2-3 days.

Copyright © 2015 OSNovative Systems, Inc.

34

For heavily draining, or very sloughy wounds initially change Enluxtra every day until the drainage subsides.

For all other wounds change every 2-3 days.

Reduce change frequency when the wound is slough-free

Copyright © 2015 OSNovative Systems, Inc.

35



#35. You may reduce the change frequency when the wound becomes about 80% slough-free.

At this point change frequency may be gradually reduced for up to 7 to 10 day wear time.



#36. So, key rules to remember:

Enluxtra success rules

Copyright © 2015 OSNovative Systems, Inc.

36



#37. Choose a larger dressing.

1. Choose a LARGER DRESSING

Choose a larger Enluxtra to cover compromised peri-wound skin and overlap healthy skin around the wound by at least 1”.

Enluxtra must cover compromised peri-wound skin and overlap the healthy skin around the wound by at least 1”

Copyright © 2015 OSNovative Systems, Inc.

37



#38. Ensure full contact.

2. Ensure FULL CONTACT

Enluxtra must touch the wound bed or packing material at all times.

Enluxtra must touch the wound bed or packing material at all times.

Copyright © 2015 OSNovative Systems, Inc.

38



#39. Always change Enluxtra before the exudate reaches the dressing edge.

3. Always change Enluxtra before exudate reaches dressing edge

Copyright © 2015 OSNovative Systems, Inc.

39



#40. When you start using Enluxtra change more often initially.

- #### 4. When you start using Enluxtra CHANGE MORE OFTEN initially
- Every day for heavily draining or very sloughy wounds
 - Every 2-3 days for average wounds
- When the wound is 80% free of slough, change frequency may be gradually reduced to 1-2 per week.

- every day for heavily draining or very sloughy wounds
- and every 2 to 3 days for average wounds

When the wound is about 80% free of slough the change frequency may be gradually reduced to once or twice per week.

Copyright © 2015 OSNovative Systems, Inc.

40



#41. We will now share with you the best Enluxtra Application practices from professionals in the field.



Application tips

Copyright © 2015 OSNovative Systems, Inc.

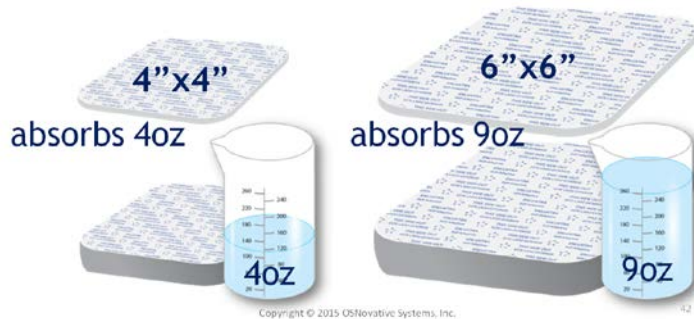
41

The larger the container -
the more exudate is absorbed



#42. Proper sizing is critical for best results. Larger dressing equals better outcomes.

Think of Enluxtra as a container:



Copyright © 2015 OSNovative Systems, Inc.

42

- the larger it is—the more exudate is absorbed away from the wound
- the more exudate is absorbed – the more harmful bacteria and fluids are locked away from the wound
- the more bacteria and fluids are evacuated – the faster the wound is cleared
- the cleaner the wound – the fewer dressing changes you will need
- fewer dressing changes means longer time between changes.

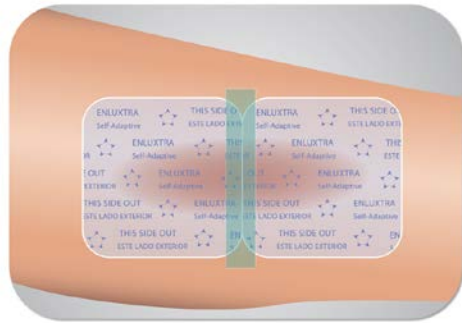
Medical professionals know that the less you disturb the wound – the faster and more efficiently it will heal, due to uninterrupted homeostasis.

If the wound is too big for one dressing...



#43. When the wound is large or has an irregular shape –

tape two or more dressings together to achieve full coverage of periwound areas and to overlap healthy skin by at least 1".

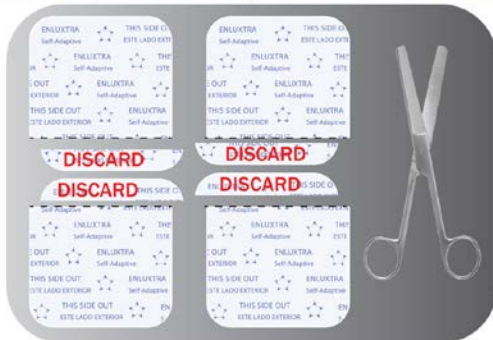


...tape two or
more
dressings
together to
cover large or
irregular
wounds.

Copyright © 2015 OSNovative Systems, Inc.

43

If the wound is too big for one dressing...

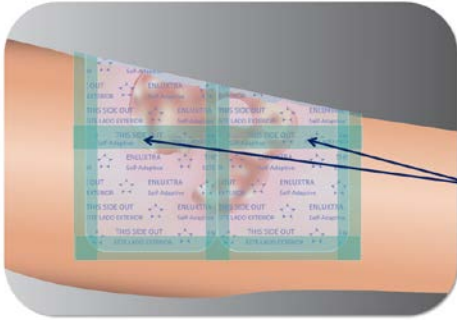


Copyright © 2015 OSNovative Systems, Inc.

43

If the wound is too big for one dressing...

When covering a large area with several dressings taped together, cut off the sides to straighten the dressing edges and to ensure there are no gaps where their corners meet.



Straighten
dressing
edges

Copyright © 2015 OSNovative Systems, Inc.

43

Trim Enluxtra only if necessary

#44. Trim Enluxtra:

- only if its edges interfere with body part movement

or

- around appliances that require a specific fit.



Copyright © 2015 OSNovative Systems, Inc.

44

Trim Enluxtra only if necessary



Copyright © 2015 OSNovative Systems, Inc.

44

Securing Enluxtra on heel and toe wounds

- Cut slits in the sides of Enluxtra and form a cup to cover a heel wound.
- Use a similar technique for toe wounds.



Copyright © 2015 OSNovative Systems, Inc.

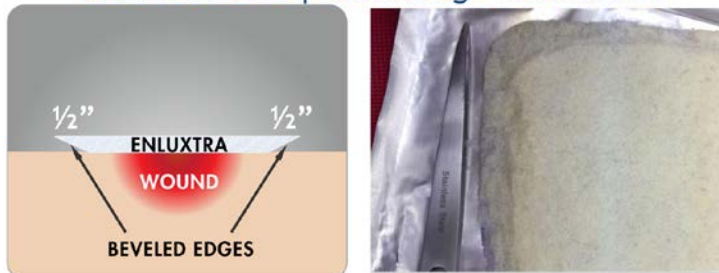
45

#45. Enluxtra is perfect for heel and toe wounds.

Simply cut slits in the sides of the dressing and form a cup to cover a heel wound; use a similar technique for toe wounds.

Edema and under compression: step 1

Bevel Enluxtra's edges with scissors to avoid/decrease product edge indentation.



Copyright © 2015 OSNovative Systems, Inc.

46

#46. When using Enluxtra for edema and under compression:

- first, using scissors, form a bevel of up to half an inch wide around the entire dressing edge on the wound contact side, and place the dressing on the wound.

This will help prevent dressing edge from indenting into the surrounding tissue.

Edema and under compression: step 2

Then bolster cotton batting around edges using a window-pane technique.



Copyright © 2015 OSNovative Systems, Inc.

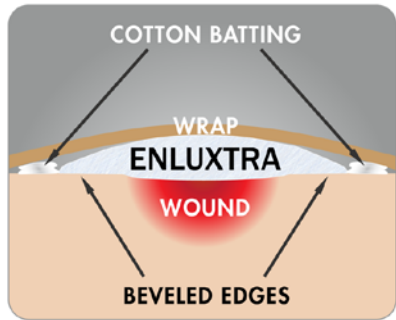
47

#47. Then bolster cotton batting around the dressing perimeter and level out the transition from dressing edge to the skin.

This will further reduce and redistribute the compression bandage pressure on the dressing edge.

Edema and under compression: result

#48. Apply compression bandage.



- The skin is protected from indentation
- The dressing has room for swelling

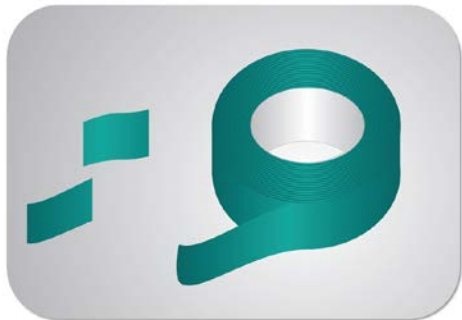
Copyright © 2015 OSNovative Systems, Inc.

48

The "bevel-and-bolster" technique will protect the delicate skin from dressing edge indentation and give the dressing room for swelling when it absorbs exudate.

Securing Enluxtra when working alone

#49. When applying Enluxtra alone, when you only have two hands to work with - use this simple technique to make the process fast and easy.



STEP 1.
Prepare two small pieces of medical grade adhesive tape.

Copyright © 2015 OSNovative Systems, Inc.

49

First, prepare 2 small pieces of medical grade adhesive tape.

Securing Enluxtra when working alone

Then temporarily secure opposite corners of the dressing to hold it in place and prevent it from sliding off.



STEP 2.
Temporarily secure opposite corners.

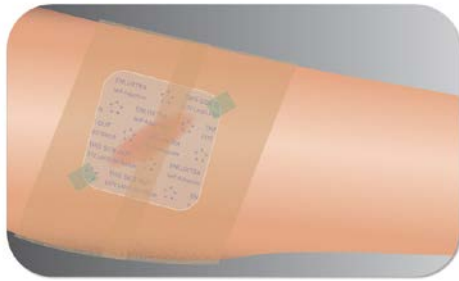
Copyright © 2015 OSNovative Systems, Inc.

49

Securing Enluxtra when working alone



Now apply a wrap.



STEP 3.
Apply a wrap.

Copyright © 2015 OSNovative Systems, Inc.

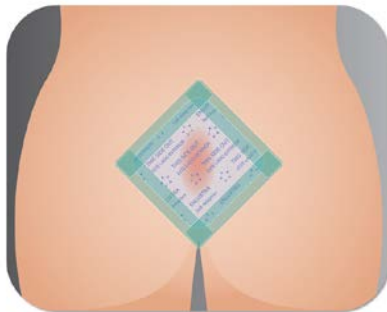
49

Securing Enluxtra for incontinence and showering



#50. Securing Enluxtra for incontinence and showering is also very simple and fast

Use a moisture-resistant adhesive tape along dressing edges. Do not use paper or cotton based tape.



- Use moisture-resistant tape

Copyright © 2015 OSNovative Systems, Inc.

50

Securing Enluxtra for incontinence and showering



Alternatively, you may use a transparent film dressing such as Tegaderm, Opsite, or similar. The film must completely cover Enluxtra and extend beyond the edges for at least 1 inch.



- Or completely cover Enluxtra with transparent film

Copyright © 2015 OSNovative Systems, Inc.

50

Securing Enluxtra on dry wounds



#51. If the wound is dry, before applying Enluxtra:



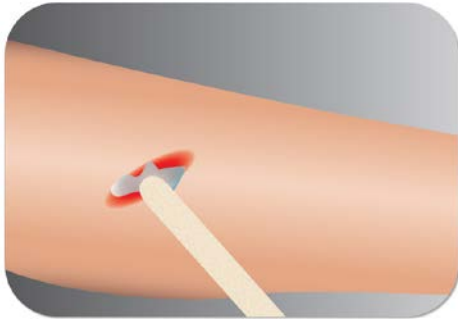
- Moisten the wound with saline or distilled water

Copyright © 2015 OSNovative Systems, Inc.

51

- moisten it with saline or distilled water
- or

Securing Enluxtra on dry wounds



- Or apply amorphous hydrogel to the wound bed area and/or exposed tendon and bone

Copyright © 2015 OSNovative Systems, Inc.

51

- apply amorphous hydrogel to the wound bed area or exposed tendon and bone. No need to pat dry.

Securing Enluxtra on dry wounds



Then completely cover Enluxtra with transparent film, making sure film extends beyond the dressing edges for at least 1 inch.



- Then completely cover Enluxtra with transparent film

Copyright © 2015 OSNovative Systems, Inc.

51

Adverse reactions



#52. Although it is very rare, a few patients have reported irritation occurring while wearing Enluxtra. Do not automatically assume that this is an allergic reaction.

Remember: Enluxtra is a hypoallergenic product.

If irritation occurs, do the following:



1. Check if Enluxtra's size is large enough.

Irritation, pain

If irritation occurs, simply go through the following steps:

Check if the dressing is large enough. If the dressing is too small, drainage could begin seeping out of the dressing edges onto healthy peri-wound tissue.

This can cause pain and discomfort and the peri-wound tissue could begin showing signs of irritation often mistaken for allergic reaction.

If irritation occurs, do the following:



2. Ask your patient at what time pain or discomfort occurred.

Ask your patient at what time pain or discomfort occurred. Take the time of day and the day of wear into account.

- Reports about discomfort occurring around 2-6 AM might be due to ischemic pain.

If irritation occurs, do the following: 

| | | | | | | | |
|-------------------------------|----|----|---|----|----|----|----|
| 1 | 2 | 3 | 4 | 5 | 6 | 7 | |
| Dressing left on for too long | | | | 11 | 12 | 13 | 14 |
| 15 | 16 | 17 | 18 | 19 | 20 | 21 | |
| 22 | 23 | 24 | 25 | 26 | 27 | 28 | |
| 29 | 30 | 31 |  | | | | |

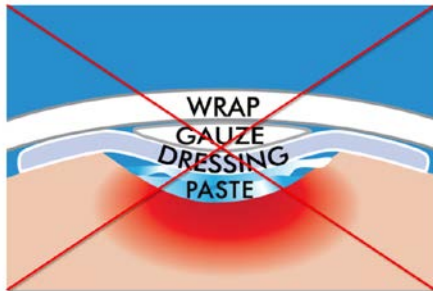
2. Ask your patient at what time pain or discomfort occurred.

- Reports around the fourth day of wear might be simply due to leakage from an overfilled dressing, and it might be time to change it!

Copyright © 2015 OSInovative Systems, Inc.

52

If irritation occurs, do the following: 



3. Ensure that irritation is not caused by use of a non-recommended product.

It is important to avoid products on our 'non-recommended' list.

These products may cause clogging of Enluxtra and impede the vertical draw of the material, preventing exudate from being absorbed into the dressing and spilling onto healthy skin.

Copyright © 2015 OSInovative Systems, Inc.

52

NOTE:



Note: Patient's personal allergies to any product used in conjunction with Enluxtra could be amplified due to the moist environment created by the dressing.

Patient's personal allergies to any product used in conjunction with Enluxtra could be amplified due to the moist environment created by the dressing.

Copyright © 2015 OSInovative Systems, Inc.

52

If an allergic reaction is suspected...



- **Check the timeframe**
 - A true allergic reaction will occur within 3 hours of dressing application
 - If the reaction occurs outside of the 3-hour window, it is most likely caused by reasons other than Enluxtra

Copyright © 2015 OSInnovative Systems, Inc.

53

#53. Please note that a true allergic reaction occurs within 3 hours after application.

If a patient has an allergic reaction to dressing polymer materials, discontinue dressing use.

However, anything after 3 hours past application is likely to be skin irritation caused by exudate and must be addressed as such.

If an allergic reaction is suspected...



- **Use a contact layer**
 - A non-adhering contact layer tolerated by the patient will resolve the problem, and Enluxtra use can be continued

Copyright © 2015 OSInnovative Systems, Inc.

53

Frequently, placement of a non-adhering wound contact layer known to be tolerated by the patient under Enluxtra resolves the problem, and Enluxtra use can be continued.



Changing Enluxtra

Copyright © 2015 OSInnovative Systems, Inc.

54

#54. Changing Enluxtra is fast, easy and painless!

You must change Enluxtra... ...before exudate reaches dressing edge



#55. Remember to always change Enluxtra before the exudate reaches the dressing edge. Otherwise, the exudate could start seeping onto the healthy peri-wound skin.



Copyright © 2015 OSNovative Systems, Inc.



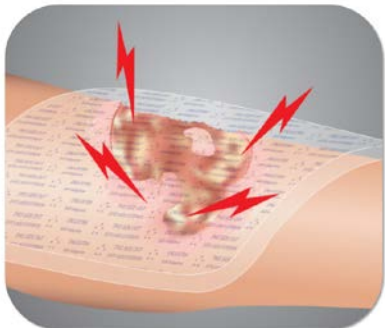
55

You have to change Enluxtra...



#56. In case the patient is experiencing more discomfort than usual, you might need to adjust placement, size, or dressing change frequency.

Please remember that regular Enluxtra wear is comfortable and painless.



Copyright © 2015 OSNovative Systems, Inc.

...if patient experiences more pain or discomfort than usual.

56

Recommended change frequency



#57. As we know Enluxtra is designed to stay on a wound for up to 7 to 10 days.

However, when you first start using the dressing it is best to increase wear time gradually to clear the wound from any non-vital tissues, such as slough and necrosis.

| | | | | | | |
|-----|-----|------|-----------|-----|-----|-----|
| ★ 1 | ★ 2 | ★ 3 | ★ 4 | ★ 5 | ★ 6 | ★ 7 |
| ★ 8 | ★ 9 | ★ 10 | 11 | 12 | 13 | 14 |
| 15 | 16 | 17 | 18 | 19 | 20 | 21 |
| 22 | 23 | 24 | 25 | 26 | 27 | 28 |
| 29 | 30 | 31 | ENLUXTRA™ | | | |

Copyright © 2015 OSNovative Systems, Inc.

57

Initial change frequency



For copiously draining wounds initially change Enluxtra every day until the drainage subsides – this usually takes about 1-2 weeks.

| | | | | | | |
|----|----|----|----|----|----|----|
| 1 | 2 | 3 | 4 | 5 | 6 | 7 |
| 8 | 9 | 10 | 11 | 12 | 13 | 14 |
| 15 | 16 | 17 | 18 | 19 | 20 | 21 |
| 22 | 23 | 24 | 25 | 26 | 27 | 28 |
| 29 | 30 | 31 | | | | |

- For copiously draining wounds, initially change every day until the drainage subsides - this usually takes about 1-2 weeks.

Copyright © 2015 OSInovative Systems, Inc.

57

Initial change frequency



For all other wounds change every 2-3 days until the wound is 80% cleared of slough – this usually takes about 1-2 weeks, as well.

| | | | | | | |
|----|----|----|----|----|----|----|
| 1 | 2 | 3 | 4 | 5 | 6 | 7 |
| 8 | 9 | 10 | 11 | 12 | 13 | 14 |
| 15 | 16 | 17 | 18 | 19 | 20 | 21 |
| 22 | 23 | 24 | 25 | 26 | 27 | 28 |
| 29 | 30 | 31 | | | | |

- For all other wounds change every 2-3 days until the wound is 80% cleared of slough - this usually takes about 1-2 weeks.

Copyright © 2015 OSInovative Systems, Inc.

57

- To optimize Enluxtra placement, study the drainage patterns after dressing removal.

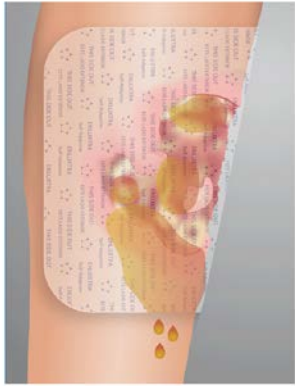


#58. To optimize Enluxtra placement for best results and longer wear study the drainage patterns upon removal.



Copyright © 2015 OSInovative Systems, Inc.

58



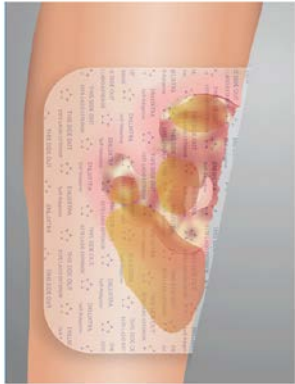
Copyright © 2015 OSInnovative Systems, Inc.



Factors, such as body positioning and gravity may cause the exudate to flow in one direction more than others.

- Factors, such as body positioning and gravity may cause the exudate to flow in one direction more than others.

58



Copyright © 2015 OSInnovative Systems, Inc.



Place the dressing to accommodate the excess exudate flow.

- Place the dressing to accommodate the excess exudate flow.

59

#59. Now, let's look at recommended co-products that work exceptionally well with Enluxtra.



Copyright © 2015 OSInnovative Systems, Inc.

Recommended
co-products

59

Adhesive tapes

- Mepitac
- Mefix
- Hypafix
- Waterproof medical tape
- Any other preferred tape



Copyright © 2015 OSNovative Systems, Inc.



60



#60. If adhesive tape is needed - use Mepitac, Mefix, Hypafix, waterproof medical tape, or any other tape you prefer.

Other forms of securing Enluxtra

- Compression wraps, Unna boots, conforming gauze wrap, Tubigrip, etc.



Copyright © 2015 OSNovative Systems, Inc.

61



#61. Enluxtra works wonderfully under compression wraps, Unna boots, conforming gauze wrap, Tubigrip, lymphedema wraps and all compression pumps.

Transparent films for dry wounds or incontinence/showering

- Tegaderm
- Opsite



Copyright © 2015 OSNovative Systems, Inc.



62



#62. When transparent films are required for dry wounds or incontinence and showering use Tegaderm or Opsite

Packing materials

- AMD gauze moistened with saline
- Moist gauze with silver hydrogel base
- RTD foam strips by Keneric Healthcare
- Iodoform strips
- Hydrofera blue strips
- Iodofoam



Copyright © 2015 OSNovative Systems, Inc.



#63. Packing materials we recommend are:

- AMD gauze moistened with saline (antimicrobial PHMB impregnated)
- Moist gauze with silver hydrogel base, or any hydrogel/saline impregnated non-shrinking product.
- RTD foam strips by Keneric Healthcare
- Iodoform strips
- Hydrofera blue strips
- Iodofoam

Antimicrobials

- Silvasorb
- Silver-Sept
- Anasept



Copyright © 2015 OSNovative Systems, Inc.



#64. Recommended antimicrobials are:

- Silvasorb
- Silver-Sept
- Anasept

Contact layers

- Mepitel Soft Silicone
- Adaptic Touch (without petroleum)



Copyright © 2015 OSNovative Systems, Inc.



#65. Contact layers:

Mepitel Soft Silicone and Adaptic Touch (without petroleum)

#66. It is important to note that some products are best avoided when using Enluxtra.



Co-products to avoid

Copyright © 2015 OSNovative Systems, Inc.



66

#67. Such as:

Co-products to avoid

- All alginates
- All cellulose products
- All honey products
- Thick and viscous pastes and ointments
- Skin preps
- All petrolatum-based products
- Moisture barriers

Copyright © 2015 OSNovative Systems, Inc.



67

- All alginates
- All cellulose products
- All honey products
- Thick and viscous pastes and ointments
- Skin preps
- All petrolatum-based products
- Moisture barriers

#68-69.

Contact information



▪ [facebook.com/osnovation](https://www.facebook.com/osnovation)



▪ contact@osnovative.com



▪ www.AnyWound.com



▪ 888-519-2297, ext.7

Copyright © 2015 OSNovative Systems, Inc.



69

This completes our video. If you would like to contact us with any questions, please do not hesitate to do so. We are happy to help!

Thank you for watching and happy healing.