

## Case study: Non-healing foot ulcer with chronic osteomyelitis secondary to crush injury

### SELF-ADAPTIVE WOUND DRESSING CLINICAL RESULTS

#### Patient:

44-year-old male with foot ulcer complicated by chronic osteomyelitis secondary to crush injury sustained four months prior.

#### A. Day 0.

Crush wound with 80% slough after four months of previous treatment measured 2.5 x 2.8 x 0.3 cm with wound edge epibole and slight undermining.



**B. Day 16.**

After two weeks of self-adaptive advanced wound dressings, the wound was 90% granulated and measured 2.0 x 2.3 x 0.3 cm with moist, flattened, non-macerated wound edges.



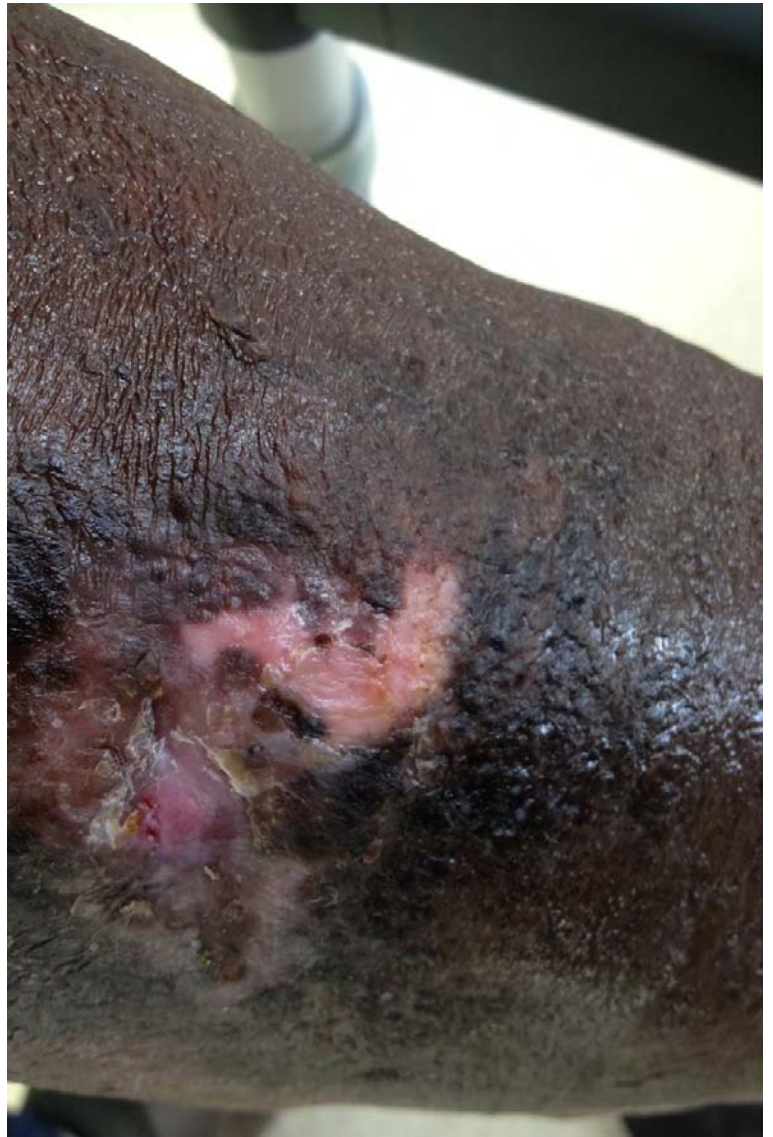
**C. Day 37.**

After five weeks of self-adaptive dressings and one week post bi-layered skin substitute, wound is nearly re-epithelialized. No maceration or pain is reported.



**D. Day 52.**

Wound is fully re-epithelialized.



**Reference:**

Juan Bravo, MD Medical Director  
Center for Wound Care and Hyperbaric Medicine  
Broward Health, Coral Springs, FL